

CLERK'S RECORDING CERTIFICATE

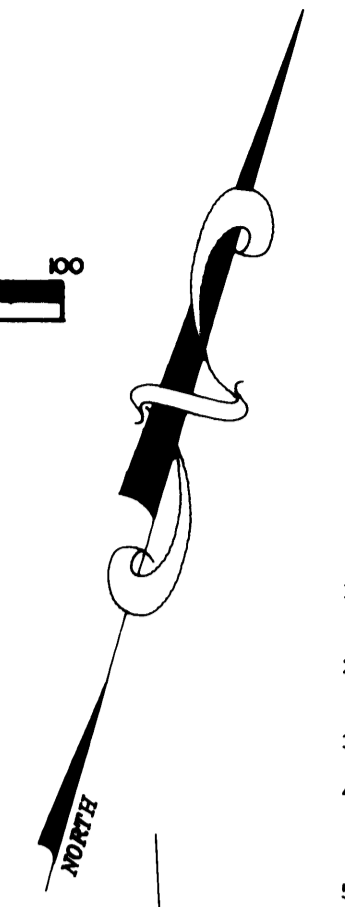
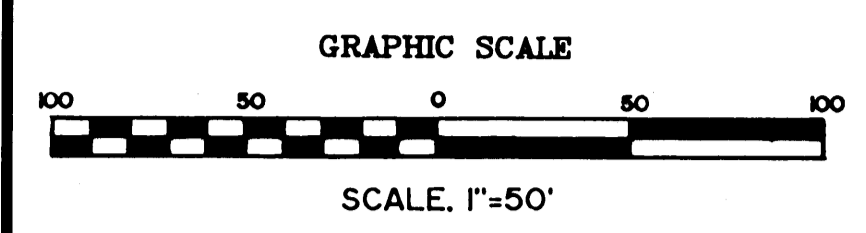
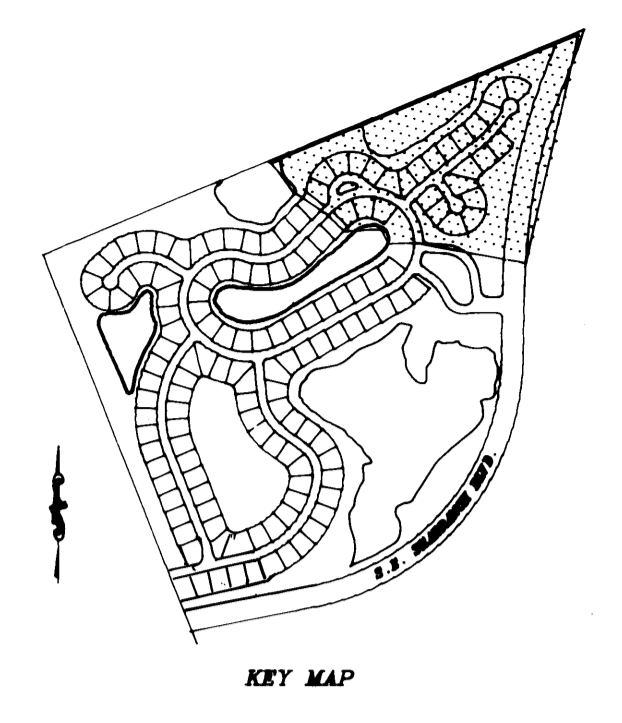
I, MARSHA STILLER, CLERK OF THE CIRCUIT COURT OF MARTIN COUNTY, FLORIDA, HEREBY CERTIFY THAT THIS PLAT WAS FILED FOR RECORD IN PLAT BOOK 12, PAGE 85, MARTIN COUNTY, FLORIDA, PUBLIC RECORDS THIS _____ DAY OF _____, 1991

MARSHA STILLER, CLERK OF THE CIRCUIT COURT MARTIN COUNTY, FLORIDA.
FILE NUMBER _____ BY _____ DEPUTY CLERK

SUBDIVISION PARCEL CONTROL NO. 34-38-42-750-000-000.0-3

A PLAT OF LOST LAKE AT HOBE SOUND, A P.U.D.

BEING A PORTION OF THE GOMEZ GRANT, MARTIN COUNTY, FLORIDA



SURVEYOR'S NOTES

- THERE SHALL BE NO BUILDING OR ANY OTHER KIND OF CONSTRUCTION OR TREES OR SHRUBS PLACED ON DRAINAGE EASEMENTS.
- THERE SHALL BE NO BUILDING OR OTHER PERMANENT STRUCTURES PLACED ON UTILITY EASEMENTS.
- THERE SHALL BE NO LOT SPLITS EXCEPT TO CREATE LARGER LOTS.
- THERE MAY BE ADDITIONAL RESTRICTIONS THAT ARE NOT RECORDED ON THIS PLAT THAT MAY BE FOUND IN THE PUBLIC RECORDS OF THIS COUNTY.
- BEARINGS SHOWN HEREON ARE REFERENCED TO THE CENTERLINE OF U.S. HIGHWAY NO. 1 (S.R. NO. 5) HAVING A BEARING OF NORTH 42°13'52" WEST.

CIVIL ENGINEERS LAND SURVEYORS
PALM CITY - P.O. BOX 1400 34900 - 407-286-8083
FT. PIERCE - 4980 S. 25th STREET 34982 - 407-466-9500

LEGEND

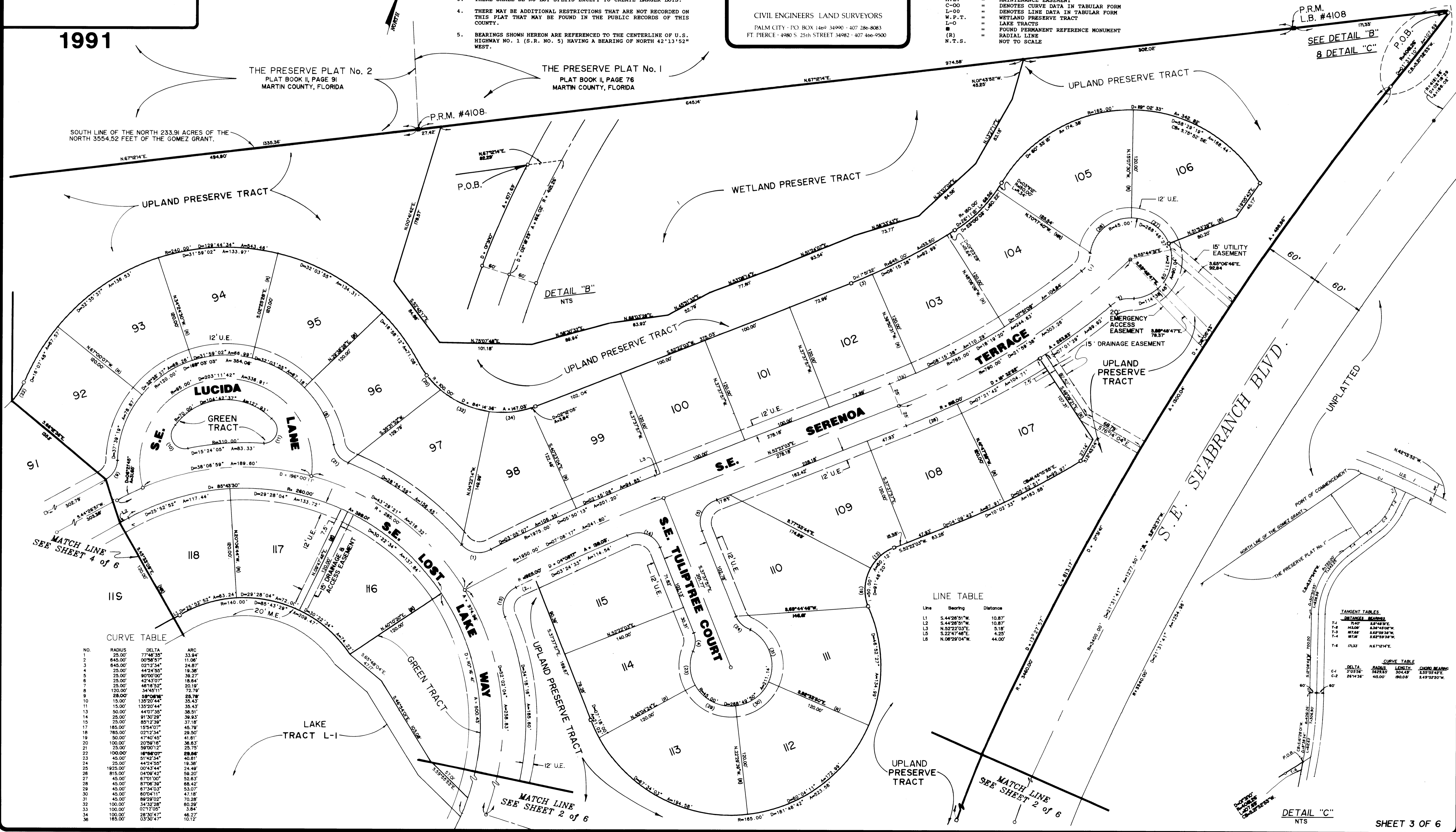
- D = DELTA
- R = RADIUS
- A = ARC LENGTH
- O (PCP) = DENOTES PERMANENT CONTROL POINT
- O (PRM) = DENOTES PERMANENT REFERENCE MONUMENT
- U.E. = UTILITY EASEMENT
- D.E. = DRAINAGE EASEMENT
- M.E. = MAINTENANCE EASEMENT
- C-00 = DENOTES CURVE DATA IN TABULAR FORM
- L-00 = DENOTES LINE DATA IN TABULAR FORM
- N.P.T. = WETLAND PRESERVE TRACT
- L-O = LAKE TRACTS
- = FOUND PERMANENT REFERENCE MONUMENT
- (R) = RADIAL LINE
- N.T.S. = NOT TO SCALE

1991

THE PRESERVE PLAT No. 2
PLAT BOOK II, PAGE 91
MARTIN COUNTY, FLORIDA

THE PRESERVE PLAT No. I
PLAT BOOK II, PAGE 76
MARTIN COUNTY, FLORIDA

SOUTH LINE OF THE NORTH 233.91 ACRES OF THE NORTH 3554.52 FEET OF THE GOMEZ GRANT.



CURVE TABLE

NO.	RADIUS	DELTA	ARC
1	25.00'	77°48'35"	33.84'
2	645.00'	00°38'57"	11.06'
3	645.00'	02°12'54"	24.87'
4	25.00'	44°24'50"	19.36'
5	25.00'	90°00'00"	39.27'
6	25.00'	42°43'07"	18.84'
7	25.00'	46°18'52"	20.19'
8	100.00'	34°45'11"	72.78'
9	28.00'	58°04'36"	25.78'
10	15.00'	135°20'44"	35.43'
11	15.00'	135°20'44"	35.43'
12	50.00'	44°07'35"	38.51'
13	25.00'	91°30'29"	38.93'
14	25.00'	85°12'58"	37.18'
15	25.00'	02°12'54"	18.84'
16	185.00'	15°44'07"	45.79'
17	785.00'	02°12'54"	72.78'
18	50.00'	47°40'45"	41.81'
19	100.00'	20°38'18"	36.83'
20	25.00'	36°00'12"	25.75'
21	100.00'	16°48'07"	29.86'
22	45.00'	51°42'54"	40.81'
23	25.00'	44°24'55"	19.36'
24	1825.00'	00°43'44"	24.49'
25	815.00'	04°09'42"	58.20'
26	45.00'	87°06'38"	48.42'
27	45.00'	87°01'00"	52.83'
28	45.00'	87°06'38"	48.42'
29	45.00'	87°04'03"	53.07'
30	45.00'	80°04'11"	47.18'
31	45.00'	89°28'02"	70.28'
32	100.00'	34°32'28"	60.29'
33	100.00'	02°12'54"	38.84'
34	100.00'	28°30'47"	46.27'
35	185.00'	03°30'47"	10.12'

LINE TABLE

Line	Bearing	Distance
L1	S. 44°28'51"W	10.87'
L2	S. 44°28'51"W	10.87'
L3	N. 52°22'03"E	5.18'
L4	S. 22°47'46"E	4.25'
L5	N. 08°28'04"W	44.00'

TANGENT TABLES

STATION	BEARING	LENGTH	CHORD BEARING
T-1	R 60°	28.4852'	32.4852'
T-2	M 60°	32.4852'	28.4852'
T-3	M 75°	32.4852'	28.4852'
T-4	M 75°	32.4852'	28.4852'
T-5	M 75°	32.4852'	28.4852'
T-6	M 75°	32.4852'	28.4852'

CURVE TABLE

STATION	RADIUS	LENGTH	CHORD BEARING
C-1	50.00'	45.00'	80.00'
C-2	25.00'	45.00'	80.00'